

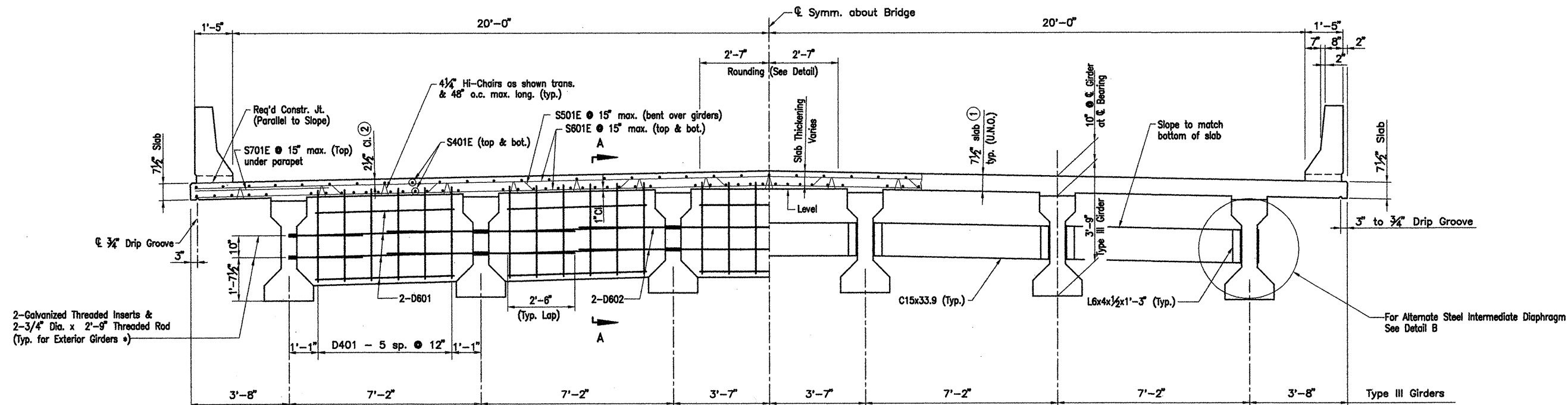
Note:
The Superstructure details shown are for use when removable deck forming is used and are the basis for measurement of Class S(AE) Concrete. See Standard Dwg. No. 14991 for allowable modifications and for tolerances when Permanent Deck Forming is used.

SLAB REINFORCING
Transverse: S501E @ 15" o.c. max. bent up over girders
S801E @ 15" o.c. max. in top and bottom
S701E @ 15" o.c. max. in top at parapet
Longitudinal: S401E in top and bottom (Placed as shown)

PARAPET REINFORCING
For placing of parapet reinforcing see dwg. 41882.

Note: Class I Protective Surface Treatment shall be applied to the Roadway Surface and to the Face and Top of the Concrete Parapet Rail.

| DATE REVISED | DATE FILMED | DATE REVISED | DATE FILMED | FED. ROAD NO. | STATE | FED. AID PROJ. NO. | SHEET NO. | TOTAL SHEETS |
|--------------|-------------|--------------|-------------|---------------|-------|--------------------|-----------|--------------|
| | | | | | ARK. | | 75 | 233 |
| | | | | JOB NO. | | 110503 | | |
| | | | | 06829 | | 308' UNIT | | 41879 |



* Galvanized Threaded Inserts & 3/4" Dia. Threaded Rods to be AASHTO M270, Gr. 36. (Non-Pay Item subsidiary to the item 'Prestressed Concrete Girders'). Galvanizing shall be in accordance with AASHTO M232

CAST-IN-PLACE CONCRETE DIAPHRAGMS

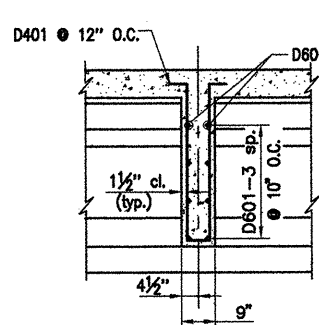
ALTERNATE STRUCTURAL STEEL DIAPHRAGMS

TYPICAL PART-SECTION AT INTERMEDIATE DIAPHRAGMS

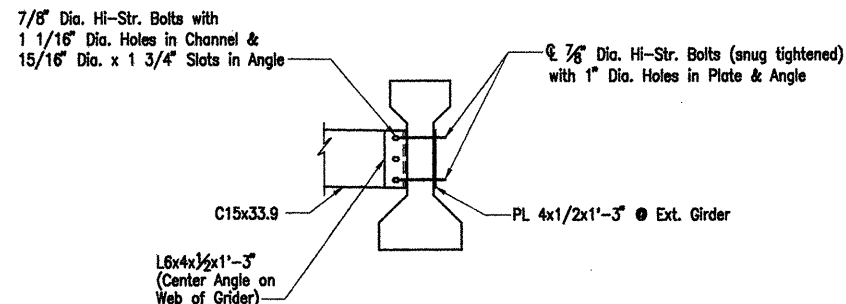
Scale: 1/2" = 1'-0"

Note: All components of the Alternate Structural Steel Diaphragms shall be galvanized, shall be AASHTO M270 Gr.36 and shall be paid for as Class S(AE) Concrete.

- ① Tolerance: Minus: 1/4"
Plus: 1/2"
② Tolerance: Minus: 1/4"
Plus: Equal to amount of slab thickening used to meet slab thickness tolerance

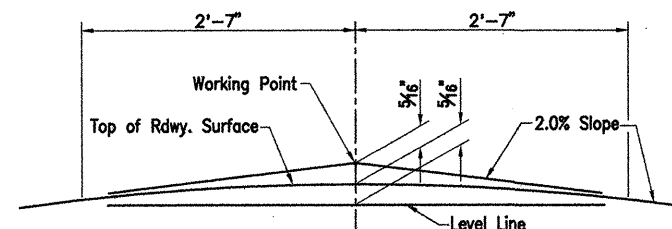


SECTION A-A
Scale: 1/2" = 1'-0"



DETAIL B
Scale: 1/2" = 1'-0"

Note: A washer shall be supplied for use under both the nut & head of the 7/8" Dia. Hi-Str. Bolts.



NOTE: Working Point matches Theoretical Roadway Grade.

ROUNDING DETAIL

No Scale



9/4/07

ALTERNATE NO. 1
ROC ROE BRIDGE
DETAILS OF 308'-0" CONT.
PRESTRESSED CONCRETE GIRDER UNITS
(SHEET 2 OF 7)

ROC ROE & WHITE RIVER RELIEF
STRS. & APPRS. (CLARENDON) (F)
MONROE COUNTY

ROUTE 79 SEC. 13
ARKANSAS STATE HIGHWAY COMMISSION
LITTLE ROCK, ARK.

Engstrom/Modjeski and Masters, Inc.

DRAWN BY: YO/GPT DATE: Sept. 07 FILENAME: b11050311_s02
CHECKED BY: JES DATE: Nov. 01 SCALE: 1/2" = 1'-0"
DESIGNED BY: YO/GPT DATE: Nov. 01
BRIDGE NO. 06829 DRAWING NO. 41879